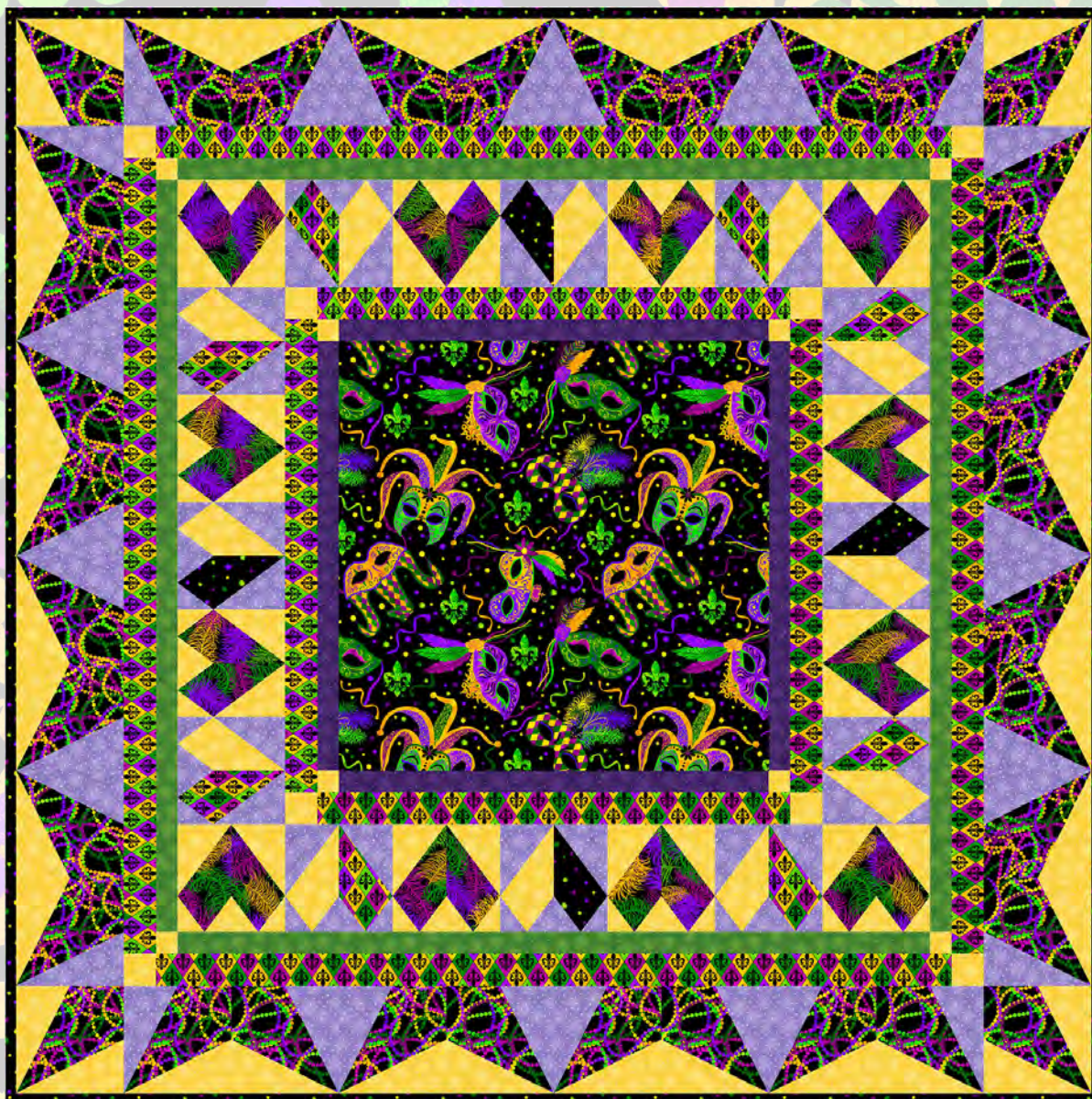




Spring Jubilee

Quilt 2
by Denise Russell



Quilt size: 50" x 50"

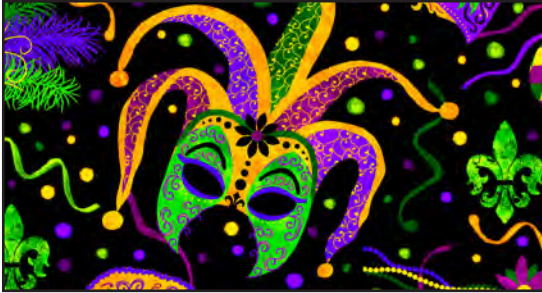
Skill Level: Intermediate

Blank Quilting Corporation
49 West 37th Street ♦ New York, NY 10018
Tel: 800-294-9495 ♦ Fax: 212-679-4578
www.blankquilting.net

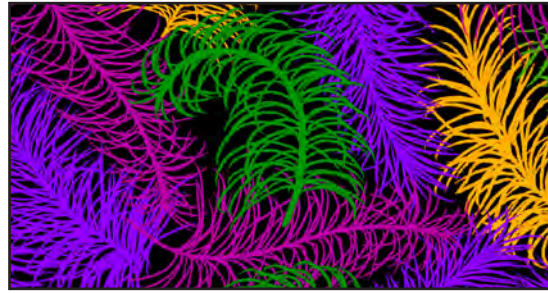
facebook

Free Project
NOT FOR RESALE

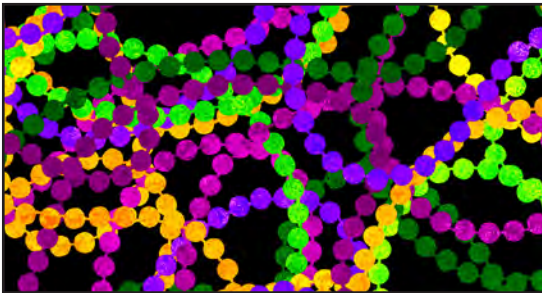
Spring Jubilee ~ Fabrics in the Collection



9898-99 Mardi Gras Masks - Black



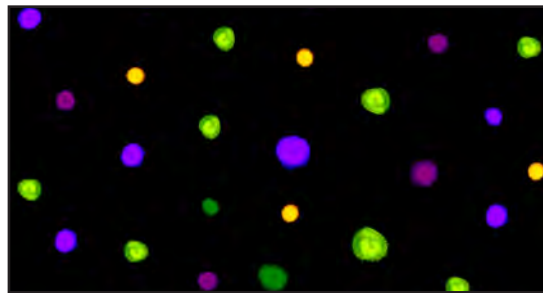
9899-99 Mardi Gras Feathers - Black



9900-99 Mardi Gras Beads - Black

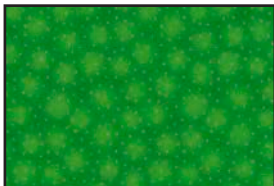


9901-55 Mardi Gras Fleur-de-lis - Purple

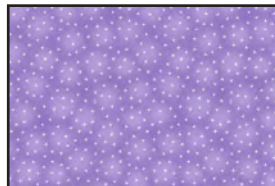


9902-99 Mardi Gras Dots - Black

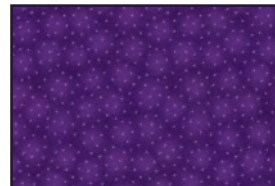
Selected fabrics from the Starlet Collection



6383 Kelly



6383 Lilac



6383 Purple



6383 Yellow

Materials

Yardages and cutting instructions are based on 42" of usable fabric width.

1/4 yard Starlet 6383 Purple
1/3 yard Starlet 6383 Kelly
1/2 yard 9899-99 Mardi Gras Feathers-Black
5/8 yard 9902-99 Mardi Gras Dots-Black
2/3 yard 9901-55 Mardi Gras Fleur-de-lis-Purple
2/3 yard 9898-99 Mardi Gras Masks-Black
1 yard 9900-99 Mardi Gras Beads-Black
1-1/4 yards Starlet 6383 Lilac
1-5/8 yards Starlet 6383 Yellow
3-1/2 yards 9898-99 Mardi Gras Masks-Black for backing
58" x 58" piece of batting
Tracing Paper

Cut Fabrics

***Note:** All strips are cut across the width of the fabric (WOF) from selvage to selvage unless otherwise noted. If cut across the length of the fabric (LOF), the **LOF** notation will be indicated.*

From Starlet 6383 Purple:

*Cut three 1-1/2" x WOF strips for border 1.

From Starlet 6383 Kelly:

*Cut four 1-1/2" x WOF strips for border 4.

From 9899-99 Mardi Gras Feathers-Black:

*Cut two 6" x WOF strips. Sub-cut twenty-four 3" x 6" rectangles. (A)

From 9902-99 Mardi Gras Dots-Black:

*Cut one 3" x WOF strip. Sub-cut four 3" x 6" rectangles. (B)

*Cut six 2-1/2" x WOF strips for binding.

From 9901-55 Mardi Gras Fleur-de-lis-Purple:

*Cut one 6" x WOF strip. Sub-cut eight 3" x 6" rectangles. (C)

*Cut seven 2" x WOF strips for border 2 (three strips) and border 5 (four strips).

From 9898-99 Mardi Gras Masks-Black:

*Cut one 20-1/2" x WOF strip. Sub-cut one 20-1/2" square.

From 9900-99 Mardi Gras Beads-Black:

*Cut four 8" x WOF strips. Sub-cut thirty-six 4-1/2" x 8" rectangles. (D)

From Starlet 6383 Lilac:

*Cut three 3" x WOF strips. Sub-cut forty-eight 2-1/2" x 3" rectangles. (E)

*Cut two 5-1/4" x WOF strips. Sub-cut twenty-four 3" x 5-1/4" rectangles. (F)

*Cut three 6-1/2" x WOF strips. Sub-cut thirty-two 3-1/2" x 6-1/2" rectangles. (G)

From Starlet 6383 Yellow:

*Cut one 2" x WOF strip. Sub-cut:

- Eight 1-1/2" squares; and

- Eight 2" squares.

*Cut three 3" x WOF strips. Sub-cut forty-eight 2-1/2" x 3" rectangles. (H)

*Cut two 5-1/4" x WOF strips. Sub-cut twenty-four 3" x 5-1/4" rectangles. (I)

*Cut one 6" x WOF strip. Sub-cut twelve 3" x 6" rectangles. (J)

*Cut four 6-1/2" x WOF strips. Sub-cut forty 3-1/2" x 6-1/2" rectangles. (K)

Assemble Blocks

***Note:** Measurements include 1/4" seam allowances. Sew with right sides together unless otherwise stated. If no direction is specified, press seams toward darker fabric.*

1. Trace border 3 and border 6 blocks onto the tracing paper including the numbers. Stack ten tracing sheets under each sheet you just traced and staple the stacks once or twice. Using the sewing machine with an old, small gauge needle and no thread (even in the bobbin), set the stitch length to 10-12 stitches per inch and carefully sew on the lines (except the outside edges). [Alternatively, hand trace each block]. Make a total of twenty-four copies of the Border 3 blocks and sixteen copies of the Border 6 blocks (plus four corner blocks). Copy numbers onto each one.

2. Use the fabrics mentioned on Tables 1 and 2 and the foundation paper templates to complete the Border 3 and the Border 6 blocks (*figures 1 and 2*, next pages). Blocks measure 5-1/2" and 5-1/2" x 10-1/2".

Border 3 Blocks		
<u>Feather Blocks: Make 12 sections A and 12 sections B.</u>		
Fabric	Location	(Quantity) Size of fabric pieces
Starlet 6383 Yellow	A1, A3, B1, B3 A4, B4	(48) 2-1/2" x 3" rectangles H (24) 3" x 5-1/4" rectangles I
9899-99 Mardi Gras Feathers-Black	A2, B2	(24) 3" x 6" rectangles A
<u>Fleur-de-lis Blocks: Make 8 sections A and 8 sections B.</u>		
Starlet 6383 Lilac	A1, A3, B1, B3 A4, B4	(32) 2-1/2" x 3" rectangles E (16) 3" x 5-1/4" rectangles F
9901-55 Mardi Gras Fleur-de-lis-Purple	A2	(8) 3" x 6" rectangles C
Starlet 6383 Yellow	B2	(8) 3" x 6" rectangles J
<u>Dots Blocks: Make 4 sections A and 4 sections B.</u>		
Starlet 6383 Lilac	A1, A3, B1, B3 A4, B4	(16) 2-1/2" x 3" rectangles E (8) 3" x 5-1/4" rectangles F
9902-99 Mardi Gras Dots-Black	A2	(4) 3" x 6" rectangles B
Starlet 6383 Yellow	B2	(4) 3" x 6" rectangles J

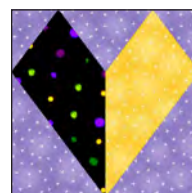
Table 1 – Fabrics for Border 3 blocks.



Make 12.



Make 8.

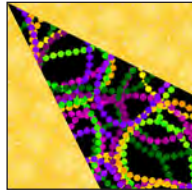


Make 4.

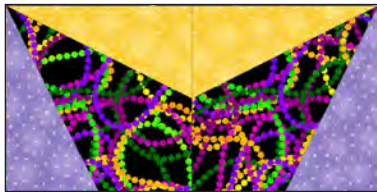
Figure 1 - Border 3 blocks.

Border 6 Blocks		
<u>Corner Blocks: Make 4.</u>		
Fabric	Location	(Quantity) Size of fabric pieces
Starlet 6383 Yellow	A1, A3	(8) 3-1/2" x 6-1/2" rectangles K
9900-99 Mardi Gras Beads-Black	A2	(4) 4-1/2" x 8" rectangles D
<u>Crown Blocks – Make 16 sections A and 16 sections B.</u>		
Starlet 6383 Yellow	A1, B1	(32) 3-1/2" x 6-1/2" rectangles K
Starlet 6383 Lilac	A3, B3	(32) 3-1/2" x 6-1/2" rectangles G
9900-99 Mardi Gras Beads-Black	A2, B2	(32) 4-1/2" x 8" rectangles D

Table 2 – Fabrics for Border 6 blocks: corner and crown.



Corner Block – Make 4.



Crown Block – Make 16.

Figure 2 – Border 6 blocks.

Assemble Quilt Top

3. Join the 1-1/2" Starlet 6383 Purple border strips together end to end using diagonal seams. Sew the strip to the right side of the 20-1/2" 9898-99 Mardi Gras Masks-Black square and trim the extra length. Repeat with the left side and press the seams toward the border. Cut two 1-1/2" x 20-1/2" Starlet 6383 Purple border strips and sew a 1-1/2" Starlet 6383 Yellow square to each end of the strips to make the top and the bottom border strips. Press the seams away from squares. Sew one border strip to the top and one to the bottom. Press the seams toward the borders.

4. Repeat step 3 with the three 2" 9901-55 Mardi Gras Fleur-de-lis-Purple and the 2" Starlet 6383 Yellow squares to make and add border 2.

5. Referring to the quilt photo and diagram for block placement, arrange five Border 3 blocks for each side of the quilt. Sew blocks together and sew one border strip to each side of the quilt center. Press the seams toward quilt center.

6. Repeat step 5 with the remaining Border 3 blocks and sew one border strip to the top and one to the bottom of the quilt center.

7. Repeat step 3 with the four 1-1/2" Starlet 6383 Kelly strips and the 1-1/2" Starlet 6383 Yellow squares

to make and add border 4. Remove paper from the border 3 blocks.

8. Repeat step 3 with the four 2" 9901-55 Mardi Gras Fleur-de-lis-Purple strips and the 2" Starlet 6383 Yellow squares to make and add border 5.

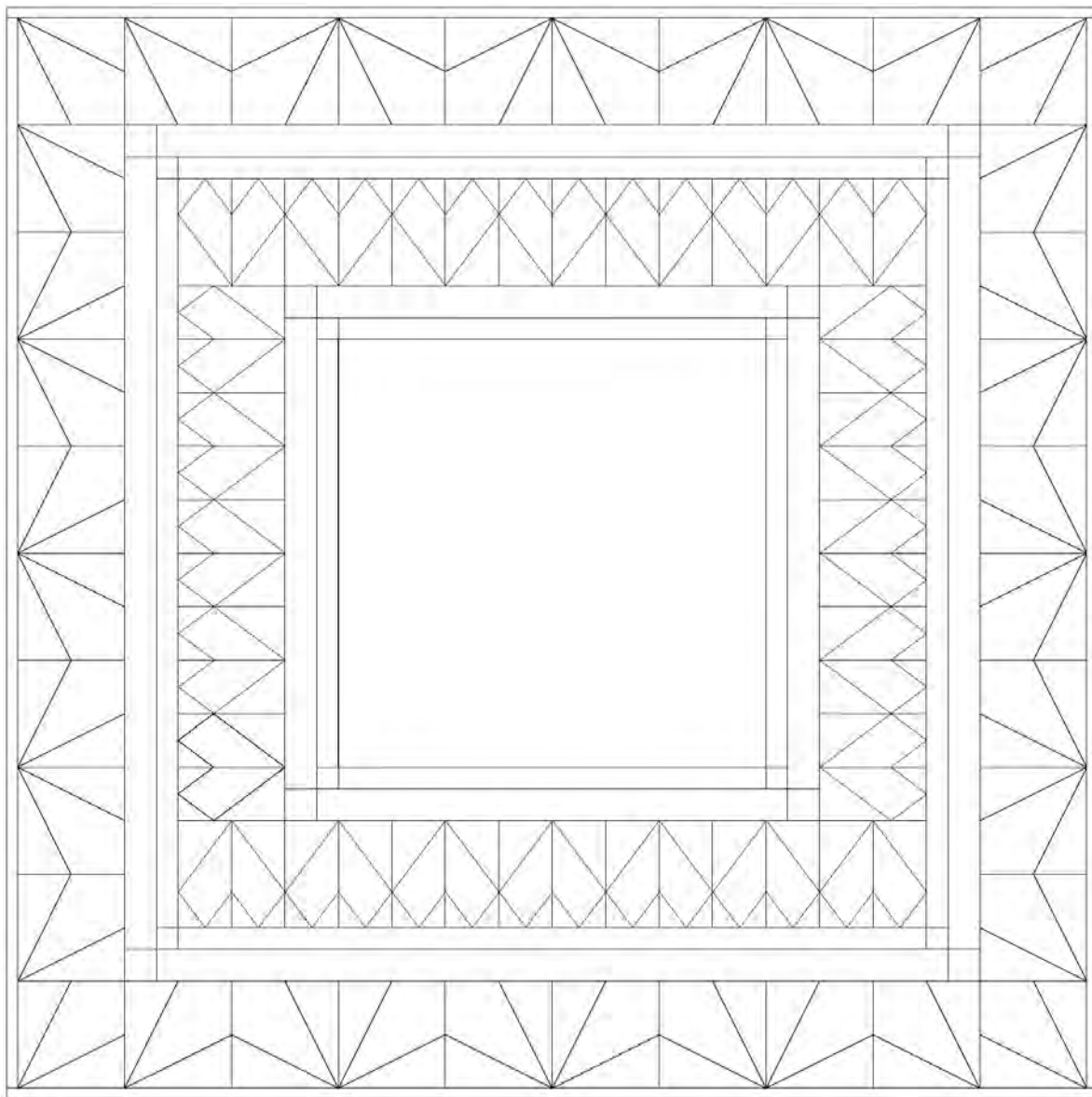
9. For border 4, arrange four Crown blocks for each side of the quilt. Sew blocks together and sew one border strip to each side of the quilt center. Press the seams toward quilt center.

10. Repeat step 9 with the four corner blocks and the remaining Crown blocks and sew one border strip to the top and one to the bottom of the quilt center. Remove paper from the border 6 blocks.

Finishing

11. Create a quilt sandwich with the batting between the quilt top and the backing. Pin or baste layers together, mark quilting design, and quilt by hand or machine. When quilting is complete, remove pins or basting, and trim batting and backing even with raw edges of the quilt top.

12. Join the six 2-1/2" 9902-99 Mardi Gras Dots-Black binding strips together end to end using a diagonal seam to make one long strip. Fold in half lengthwise and press. Sew binding to the edges of the quilt top, mitering corners, and overlapping ends. Fold binding to the back of the runner and stitch it in place by hand to finish.



Quilt Diagram

©2019 Blank Quilting Corporation

Every effort has been made to ensure that all projects are error free. All the information is presented in good faith; however, no warranty can be given nor results guaranteed as we have no control over the execution of instructions. Therefore, we assume no responsibility for the use of this information or damages that may occur as a result. When errors are brought to our attention, we make every effort to correct and post a revision as soon as possible. Please make sure to check www.blankquilting.net for pattern updates prior to starting the project. We also recommend that you test the project prior to cutting for kits. Finally, all free projects are intended to remain free to you and are not for resale.

Templates

1" square

